



## Installation Instructions—Racingline High Flow Pre-Cat (HFPC) Install

### Included Items

- 1 front precat
- 1 rear precat
- 4x M8x25 bolts
- 2x M8x35 bolts

- 2 M8 nuts
- 10x M10x35 bolts
- 10x M10 Nuts
- 10x M10 lock washers
- 8x M10 Washers

### Tools Needed:

- Various Sockets + Ratchet
- Various wrenches
- RTV COPPER sealant

### **\*\*\*NOTE\*\*\***

***This installtion should NOT be performed by any individual inexperienced in automotive mechanics. A properly trained professional is recommended***



1. safely raise and support the vehicle
2. Remove Ypipe and 8x 14mm nuts/bolts
3. Remove and put aside both lower o2 sensors



**\*\* removal of manifolds is not required, images are for illustration purposes only\*\***

4. The front precat is attached to the manifold by 6x 12mm nuts/bolts.

5. Using the supplied hardware reattach the front precat noting that the 8x25mm bolts will thread into the manifold. Use the (2) 8x35 bolts and 8mm nuts for the none threaded holes. Use RTV COPPER gasket sealer to aid in sealing joint between manifold and pre-cat



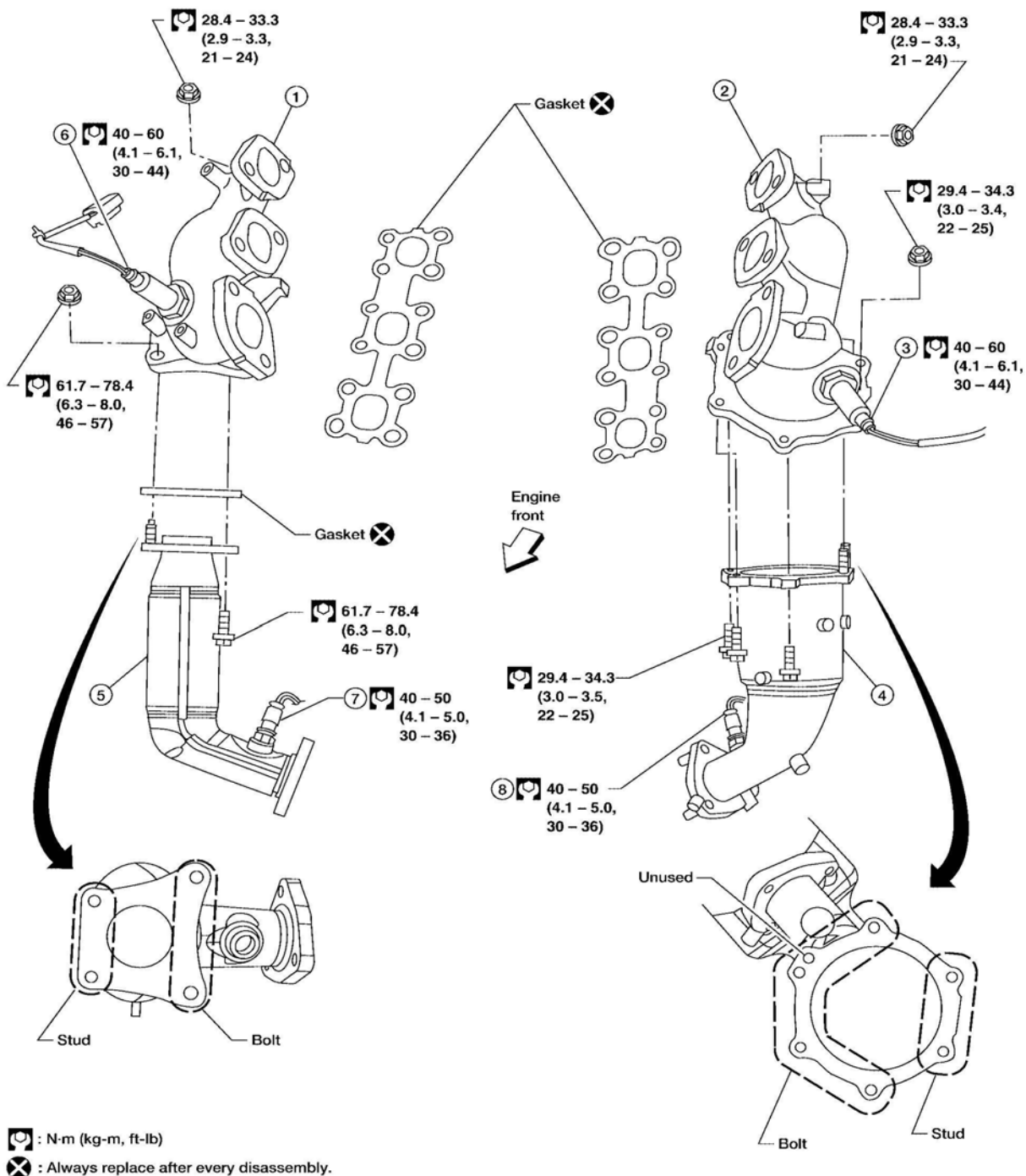
6. The rear precat is held in place by (4) 14mm nuts. The 2 closest to the motor are bolts and will remove from the bottom. The 2 closest to the firewall are studs and need to have the nuts removed from the top of the flange.

7. Use the supplied 10mm bolts to reattach the new HFPC. Use RTV COPPER gasket sealer to aid in sealing joint between manifold and pre-cat

8. The remaining 10mm hardware is to reattach the Ypipe to the Pre-Cats

EXHAUST MANIFOLD AND THREE WAY CATALYST

Removal and Installation



WBIA0267E

- |  |  |   |
|--|--|---|
| 1. Exhaust manifold (RH bank)              | 2. Exhaust manifold (LH bank)              | 3. Air fuel ratio (A/F) sensor 1 (bank 2) |
| 4. Three way catalyst (manifold) (bank 2)  | 5. Three way catalyst (manifold) (bank 1)  | 6. Air fuel ratio (A/F) sensor 1 (bank 1) |
| 7. Heated oxygen sensor 2 (front) (bank 1) | 8. Heated oxygen sensor 2 (front) (bank 2) |   |