



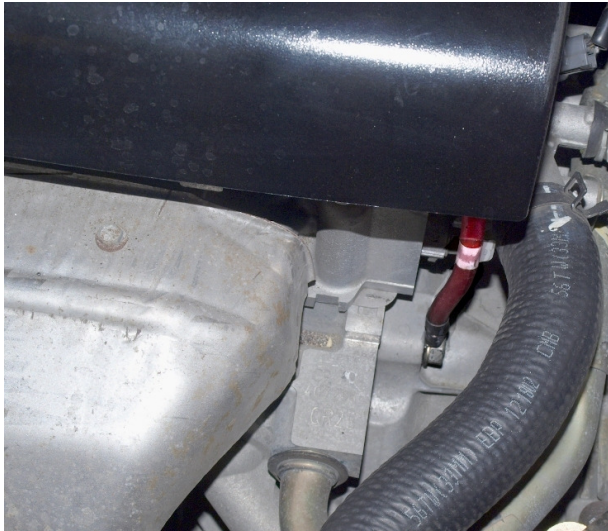
## Installation Instructions—04-08 Maxima/02-06 Altima V6 Grounding kit

### Included Items

- 8 Ground wires numbered: 1,1,1,1,1,7,7,7
- 6mm nut, 6mm bolt
- washers

### Tools Needed:

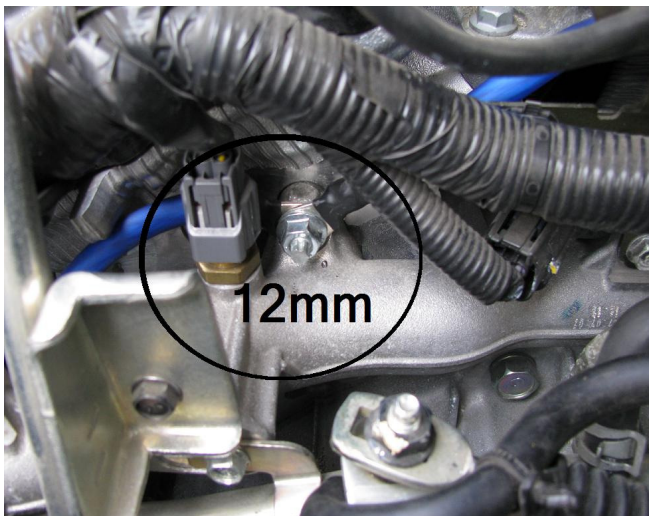
- Ratchet + Various sockets
- Wrenches



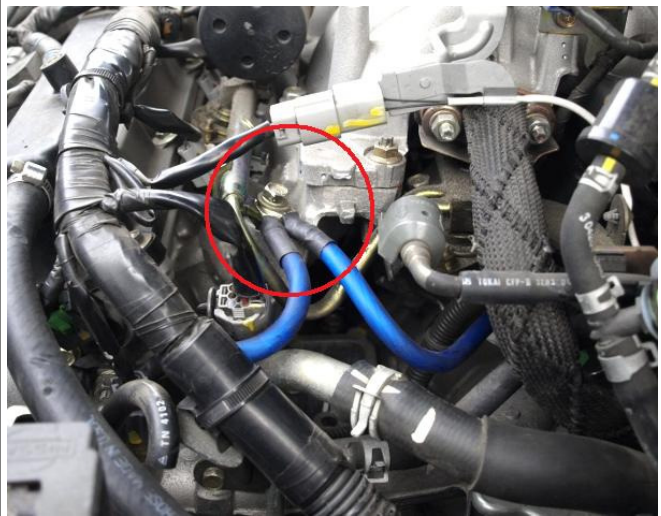
1. Remove the Battery negative terminal prior to installing any portion of the grounding kit
2. Remove factory air intake system and engine cover.



3. Wire #7 from trans bolt ( pics 1 & 2. located just in front of starter and below coolant line) to side of cylinder head.

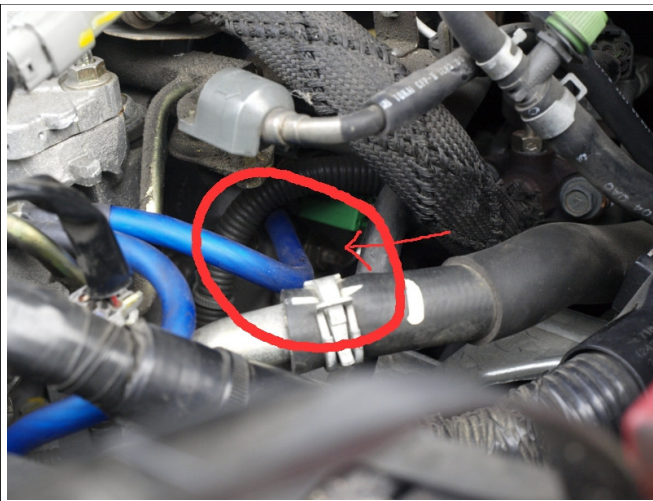


4. Wire #7 from transmission to front cylinder head, just above coolant line.

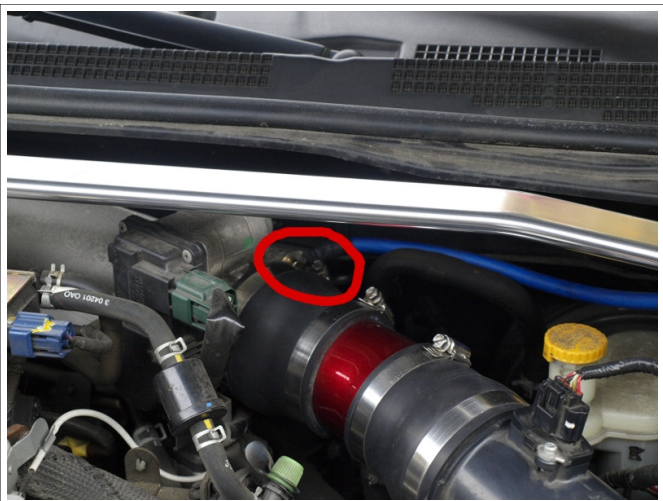


5. Wire #7 from front cylinder head ( step 4) to bolt located on lower intake manifold/fuel rail

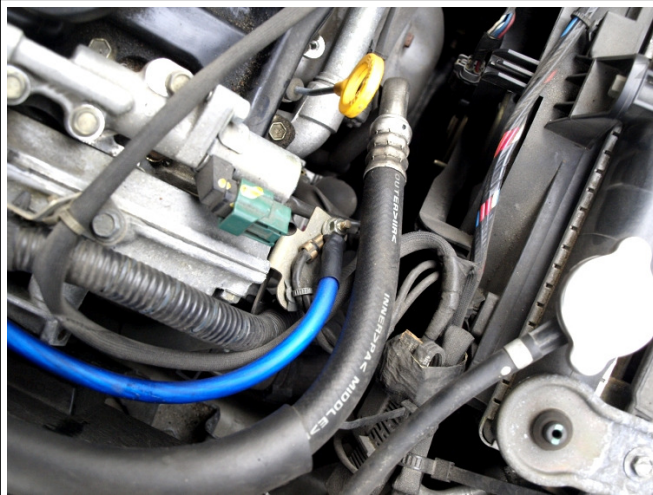




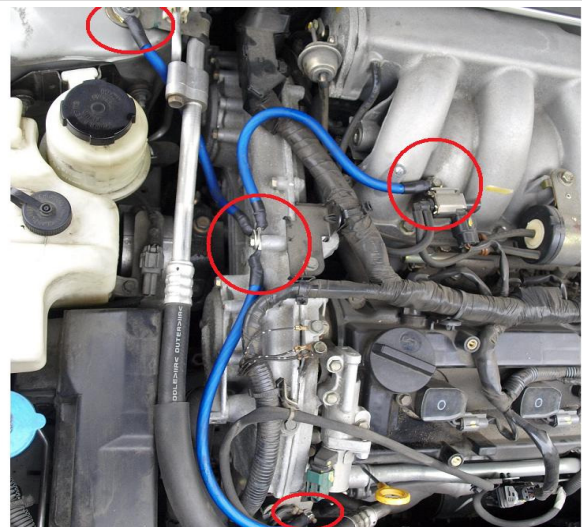
6. Wire #7 front lower IM (step 5) to rear cylinder head bolt just above coolant line. You will need a 12mm socket, u-joint-and small extension piece to reach this bolt.



7. Wire #1 from throttle body to driver side strut tower



8. Wire #1 from existing ground on top of alternator to timing cover



9. Wire #'s 1,1,1 to timing cover- Install using supplied bolt and washer. Wires #1 -to- passenger side strut tower and upper intake manifold.



9. With all other wire now installed attach wire #1 to the battery tray and the negative terminal on the battery using supplied nut and washers.



10. Enjoy !!